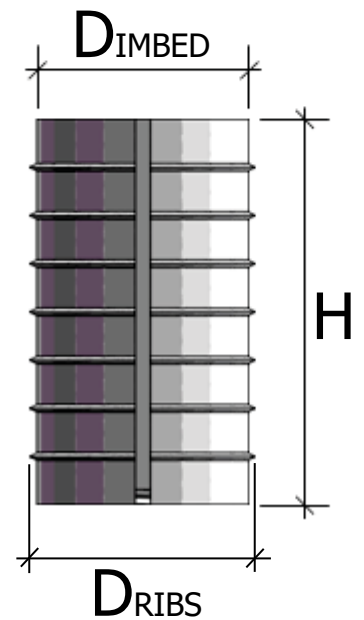
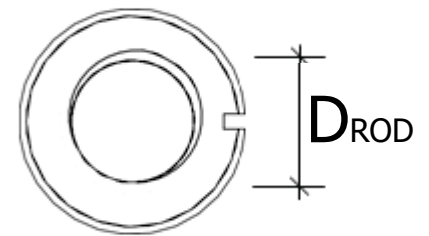
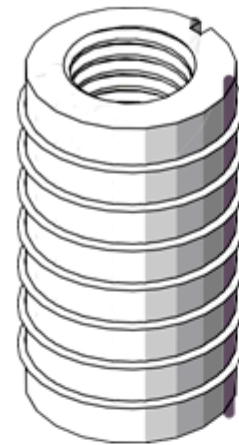


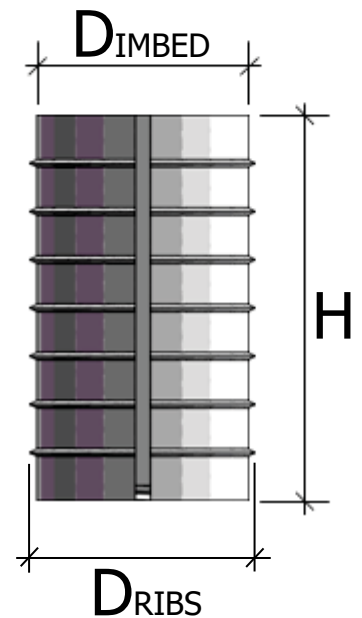
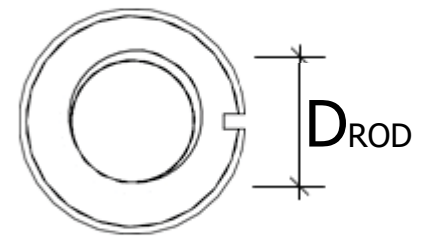
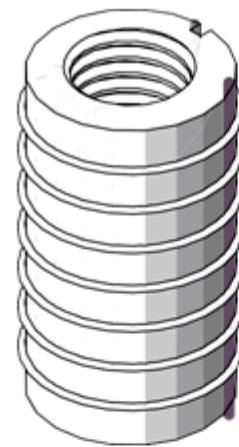
Imperial GRI dimensions

Part #	Thread type	D _{ROD}	TPI	D _{IMBED}	H
GRI 0100	UNC	3/8"	16	19	25
GRI 0102	UNC	1/2"	13	22	35
GRI 0104	UNC	5/8"	11	25	45
GRI 0106	UNC	3/4"	10	28	50
GRI 0108	UNC	7/8"	9	31	60
GRI 0110	UNC	1"	8	35	70
GRI 0112	UNC	1-1/8"	7	38	80
GRI 0114	UNC	1-1/4"	7	41	85
GRI 0116	UNC	1-3/8"	6	44	95
GRI 0118	UNC	1-1/2"	6	47	100
GRI 0200	UNC-galv	3/8"	16	19	25
GRI 0202	UNC-galv	1/2"	13	22	35
GRI 0204	UNC-galv	5/8"	11	25	45
GRI 0206	UNC-galv	3/4"	10	28	50
GRI 0208	UNC-galv	7/8"	9	31	60
GRI 0210	UNC-galv	1"	8	35	70
GRI 0212	UNC-galv	1-1/8"	7	38	80
GRI 0214	UNC-galv	1-1/4"	7	41	85
GRI 0216	UNC-galv	1-3/8"	6	44	95
GRI 0218	UNC-galv	1-1/2"	6	47	100
GRI 0300	UNC-left	3/8"	16	19	25
GRI 0302	UNC-left	1/2"	13	22	35
GRI 0304	UNC-left	5/8"	11	25	45
GRI 0306	UNC-left	3/4"	10	28	50
GRI 0308	UNC-left	7/8"	9	31	60
GRI 0310	UNC-left	1"	8	35	70
GRI 0312	UNC-left	1-1/8"	7	38	80
GRI 0314	UNC-left	1-1/4"	7	41	85
GRI 0316	UNC-left	1-3/8"	6	44	95
GRI 0318	UNC-left	1-1/2"	6	47	100
GRI 0400	UNF	3/8"	24	19	25
GRI 0402	UNF	1/2"	20	22	35
GRI 0404	UNF	5/8"	18	25	45
GRI 0406	UNF	3/4"	16	28	50
GRI 0408	UNF	7/8"	14	31	60
GRI 0410	UNF	1"	12	35	70
GRI 0412	UNF	1-1/8"	12	38	80
GRI 0414	UNF	1-1/4"	12	41	85
GRI 0416	UNF	1-3/8"	12	44	95
GRI 0418	UNF	1-1/2"	12	47	100



Metric GRI dimensions

Part #	Thread type	D _{ROD}	Pitch	D _{IMBED}	H
GRI 0600	Metric	M10	1.5	19	25
GRI 0602	Metric	M12	1.8	22	35
GRI 0604	Metric	M16	2.0	25	45
GRI 0606	Metric	M20	2.5	28	50
GRI 0608	Metric	M22	2.5	31	60
GRI 0610	Metric	M24	3.0	35	70
GRI 0612	Metric	M27	3.0	38	80
GRI 0614	Metric	M30	3.5	41	85
GRI 0616	Metric	M33	3.5	44	95
GRI 0618	Metric	M39	4.0	47	100
GRI 0700	Metric-left	M10	1.5	19	25
GRI 0702	Metric-left	M12	1.8	22	35
GRI 0704	Metric-left	M16	2.0	25	45
GRI 0706	Metric-left	M20	2.5	28	50
GRI 0708	Metric-left	M22	2.5	31	60
GRI 0710	Metric-left	M24	3.0	35	70
GRI 0712	Metric-left	M27	3.0	38	80
GRI 0714	Metric-left	M30	3.5	41	85
GRI 0716	Metric-left	M33	3.5	44	95
GRI 0718	Metric-left	M39	4.0	47	100
GRI 0800	Metric-fine	M10	1.0	19	25
GRI 0802	Metric-fine	M12	1.3	22	35
GRI 0804	Metric-fine	M16	1.5	25	45
GRI 0806	Metric-fine	M20	1.5	28	50
GRI 0808	Metric-fine	M22	1.5	31	60
GRI 0810	Metric-fine	M24	1.5	35	70
GRI 0812	Metric-fine	M27	1.5	38	80
GRI 0814	Metric-fine	M30	1.5	41	85
GRI 0816	Metric-fine	M33	1.5	44	95
GRI 0818	Metric-fine	M39	1.5	47	100



Special GRI dimensions

Part #	Thread type	D _{ROD}	Pitch	D _{IMBED}	H
GRI 0900	Dywidag	#6	8	31	60
GRI 0902	Dywidag	#7	10	35	70
GRI 0904	Dywidag	#8	13	38	80
GRI 0906	Dywidag	#9	16	43	95
GRI 0908	Dywidag	#10	18	46	100
GRI 0910	Dywidag	#11	20	50	110
GRI 0912	Dywidag	#14	21	56	120

Part #	Thread type	D _{ROD}	TPI	D _{IMBED}	H
GRI 1000	ACME	3/8"	8	19	25
GRI 1005	ACME	1/2"	8	22	35
GRI 1010	ACME	5/8"	6	25	45
GRI 1015	ACME	3/4"	5	28	50
GRI 1020	ACME	7/8"	6	31	60
GRI 1025	ACME	1"	4	35	70
GRI 1030	ACME	1-1/8"	5	38	80
GRI 1035	ACME	1-1/4"	4	41	85
GRI 1040	ACME	1-3/8"	4	44	95
GRI 1045	ACME	1-1/2"	4	47	100

GRI 1100	ACME-left	3/8"	8	19	25
GRI 1105	ACME-left	1/2"	8	22	35
GRI 1110	ACME-left	5/8"	6	25	45
GRI 1115	ACME-left	3/4"	5	28	50
GRI 1120	ACME-left	7/8"	6	31	60
GRI 1125	ACME-left	1"	4	35	70
GRI 1130	ACME-left	1-1/8"	5	38	80
GRI 1135	ACME-left	1-1/4"	4	41	85
GRI 1140	ACME-left	1-3/8"	4	44	95
GRI 1145	ACME-left	1-1/2"	4	47	100

Part #	Thread type	D _{ROD}	Pitch	D _{IMBED}	H
GRI 1200	Trapezoidal-metric	M10	2	19	25
GRI 1205	Trapezoidal-metric	M12	3	22	35
GRI 1210	Trapezoidal-metric	M16	3	25	45
GRI 1215	Trapezoidal-metric	M20	5	28	50
GRI 1220	Trapezoidal-metric	M22	6	31	60
GRI 1225	Trapezoidal-metric	M24	4	35	70
GRI 1230	Trapezoidal-metric	M28	5	38	80
GRI 1235	Trapezoidal-metric	M40	4	47	100

